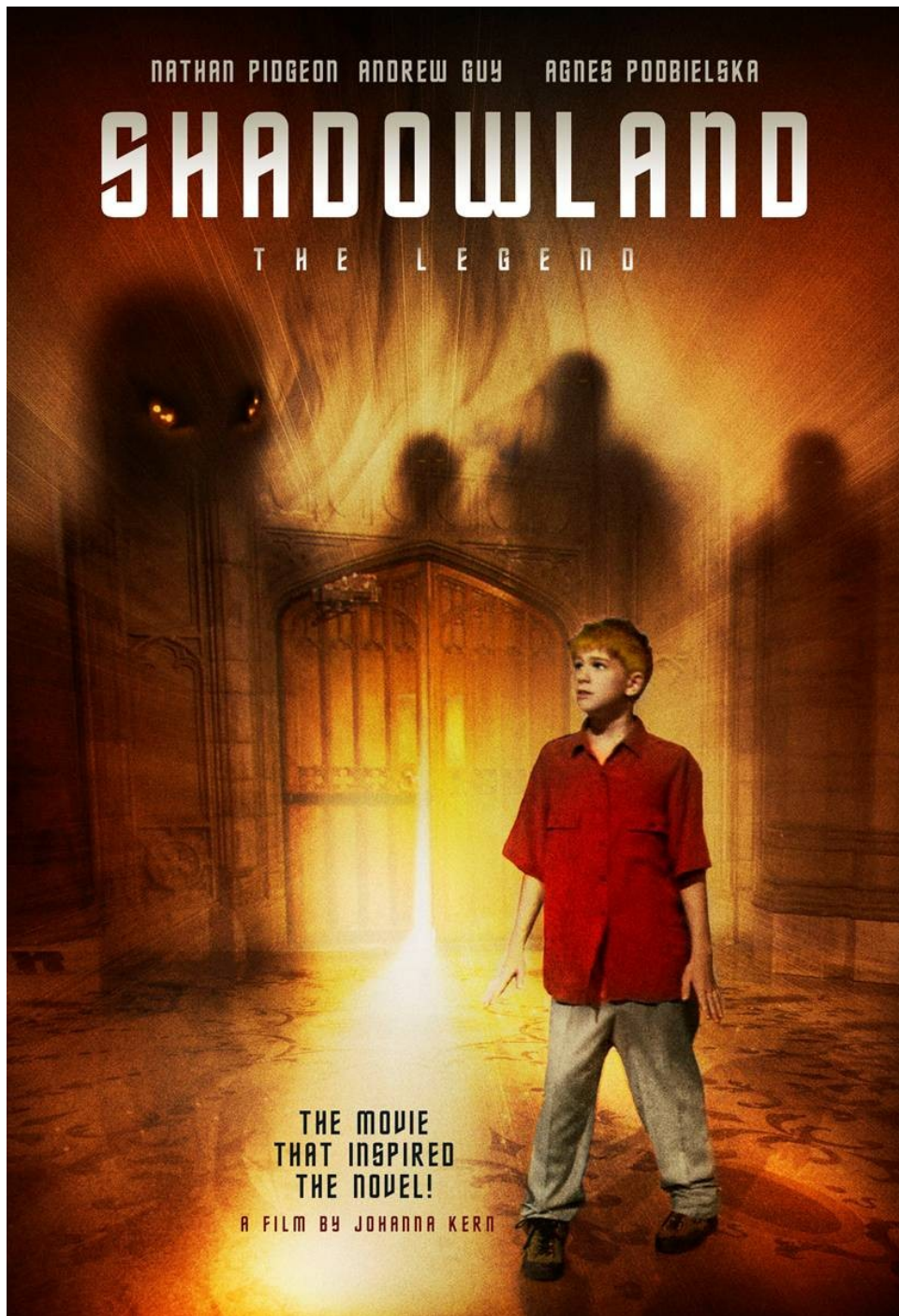


NATHAN PIDGEON ANDREW GUY AGNES PODBIELSKA

SHADOWLAND

T H E L E G E N D



THE MOVIE
THAT INSPIRED
THE NOVEL!

A FILM BY JOHANNA KERN

PRESS KIT

Film Info





SYNOPSIS:

Young boy accidentally gets transported to a mysterious Shadowland, where he loses his sister, learns his identity, gains extraordinary powers and, according to an Old Legend, has to help everyone to liberate themselves from an army of Shadows, Patrolling Thieves and The Great Syndicate. In the meantime the underground opposition begins to revolt.

PRODUCTION NOTES:

Shot on twenty-five locations in Ontario, Canada, with a large cast (over 3 hundred performers, including martial artists and actors: adults, teenagers and children) – the film and visual effects have been completed in September 2011.

Pre-publicity media coverage achieved total *gross impressions* of more than 3 million Canadians, through *CityTV, MovieTelevision, CHEX-TV, CFMT-TV, Mississauga News, Oshawa/Whitby This Week and Playback Magazine*.

The original screenplay was based on a stage production -- *Frank, Big Baba and Forty Thieves* -- that ran in 2001.

“Shadowland can happen anytime, and anywhere”, says the writer/producer/director Johanna Kern. “This is a story to empower young people to fully become the archetypal Warriors, Mystics, Kings and Queens – that they already are.”

Recently, a novel based on the film script, written by a British author Roy Fitzsimmonds and Johanna Kern, has been completed.

The music is scored by the highly acclaimed top European composer, Romuald Lipko, who has written over 200 hit songs, and is the leader of the famous European rock band, *Budka Suflera* (EU top ten for 30 years). Romuald Lipko & Johanna Kern co-wrote the leading/promotional song for the film.

The *Shadows* are performed by dozens of high-profile martial artists, including Canadian National Martial Artists team members.

DIRECTOR BIO:

Johanna Kern first began her career as a professional actress in Europe, and moved to Toronto to pursue a career in film and television. Kern is recognized for her unique directing style and her vision that captivates broad audiences and draws exceptional professionals to her productions.

Recently, she has completed a fantasy/family/adventure feature film *Shadowland: The Legend* -- and wrote the next screenplay in the *Shadowland* series – *Shadowland: The Warrior*. She is also developing screenplays for the next films: *Shadowland: The Mystic* ; *Shadowland: The King*.

Kern has made eight dramatic short films including the critically acclaimed short *Cherries for Brian* (1997 Palm Springs International Film Festival, Raindance International Film Festival and Figueira da Foz International Film Festival-Portugal).

She has written seven feature film screenplays and worked as a producer/director on a number of TV commercials and music videos. She has written/produced/directed two musicals for the stage (with large casts of more than 300 actors), and founded an acting school for young performers. She was also the founder/executive director of *Fantasy Worldwide Film Festival*. Kern holds an Honors B.A. of Applied Arts/Film from Ryerson University. Previously studied theatre and fine arts in Europe.





CREDITS :

AFTER RAIN FILMS PRESENTS
IN ASSOCIATION WITH FACTORY FILM STUDIO
A JOHANNA KERN FILM
SHADOWLAND: THE LEGEND

“FRANK”: NATHAN PIDGEON

“CAROLINE”: AGNES PODBIELSKI

“DONLORE”: ANDREW GUY (*The Rhino Brothers, Cooler Climate, Man with a Gun, Kissed, Intersection, Sliders, Highlander*)

“REVIL”: MARK WHELAN (He is the face of the *Sleeman™* franchise)

“CENTRES”: VIESLAV KRISTYAN (*Fugitive Pieces, 54, Darkman III, Nikita, The Shrine, Soul Food, Relic Hunter, PSI Factor: Chronicles of the Paranormal, Kung Fu: The Legend Continues*)

“CONROY”: BARRY MINSHULL

“MOONA”: CHRISTINE DZIUBA

WRITTEN, PRODUCED AND DIRECTED BY:

JOHANNA KERN

EXECUTIVE PRODUCERS: JOHANNA KERN, MICHAEL PATRICK LILLY

LINE PRODUCER: TOM WILSON

ASSOCIATE PRODUCERS: MARIA B. KWASEK, SONYA F. ROBERTS, SHANNON SKINNER

MUSIC BY: ROMUALD LIPKO

ASSOCIATE COMPOSERS: PIOTR KOMINEK & LUKASZ PILCH

CINEMATOGRAPHY BY: MICHEL ZEYNALI

EDITED BY: MICHAEL P. BELANGER

SOUND EDITING BY: STEPHEN MUIR

MIXING BY: STEPHEN TRAUB

VISUAL EFFECTS BY: OPTIX DIGITAL PICTURES OF TORONTO (BRENTON A. RICHARDS)

TECH SPECS :

RUNNING TIME: 90 MINS

COLOR / 23.98 FPS / 5.1 SURROUND

CONTACT :

johannakern@shadowlandthelegend.com or afterrainfilms@gmail.com

